

# Organization and Functional Charts FY 2025-2026

As of July 1, 2025

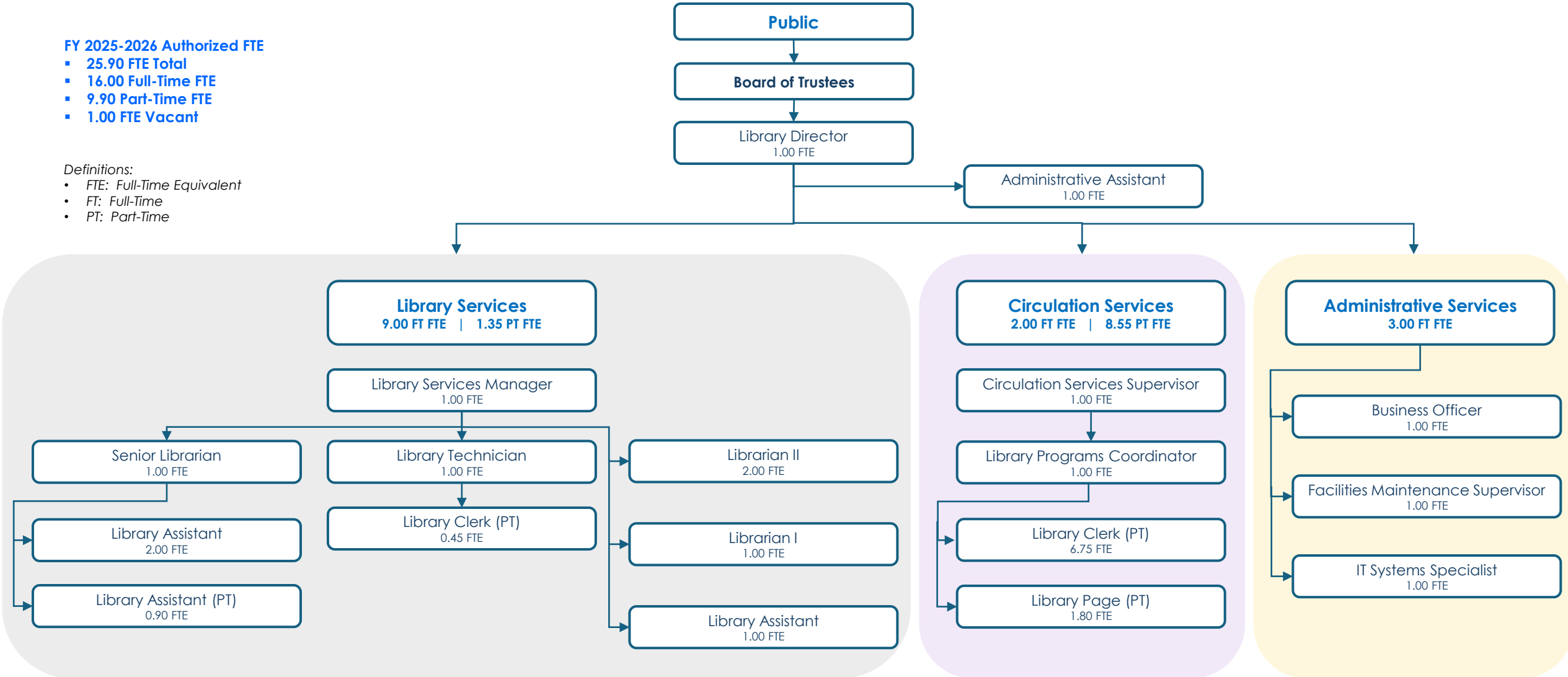
## Organization Chart As of July 1, 2025

### FY 2025-2026 Authorized FTE

- 25.90 FTE Total
- 16.00 Full-Time FTE
- 9.90 Part-Time FTE
- 1.00 FTE Vacant

### Definitions:

- FTE: Full-Time Equivalent
- FT: Full-Time
- PT: Part-Time





## Functional Chart As of July 1, 2025

### Library Services to the Public

#### Library Services

9.00 FT FTE | 1.35 PT FTE

- Reference Assistance
- Library Collections Management
- Adult, Teens, and Children & Family Programs
- Events & Outreach
- School Library Tours

#### Circulation Services

2.00 FT FTE | 8.55 PT FTE

- Public Circulation Desk
- Patron Account Management
- Events & Outreach
- Passport Services
- School Site Events

#### Administrative Services

5.00 FT FTE

- Library Administration
- Leadership and Management
- Regulatory Compliance Reporting
- Board Meetings
- Elections Management
- Records Management
- Risk Management
- Human Resources
- Agency Partnerships and Collaboration
- Policy Development
- Financial and Business Services
- Information Technology Services
- Facilities Management